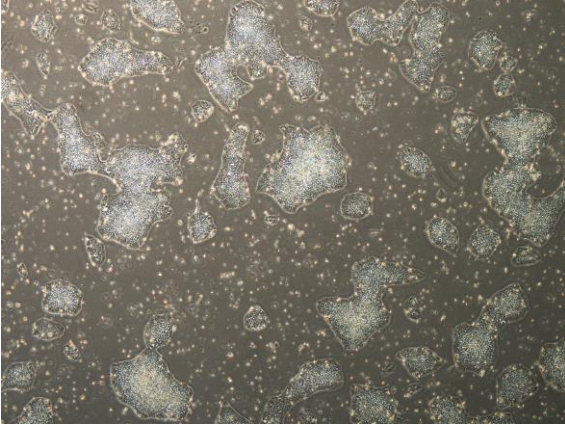
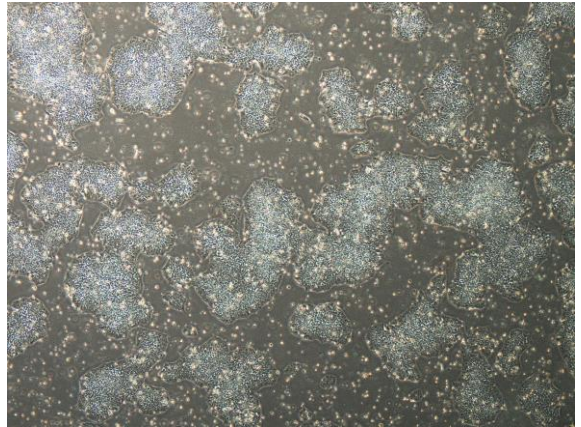


## 【 CiRA-j-1547 】 Morphology of iPSC colonies

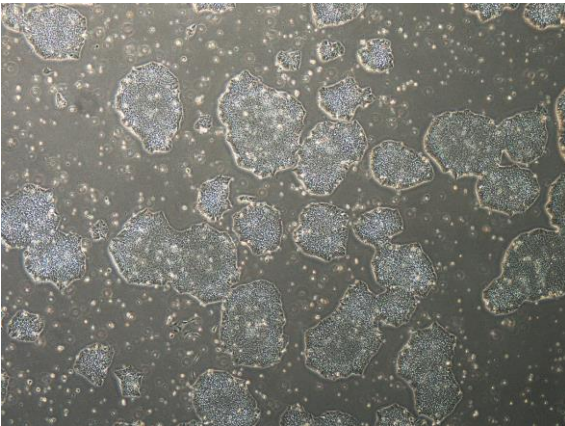
CiRA-j-1547-A: passage-3



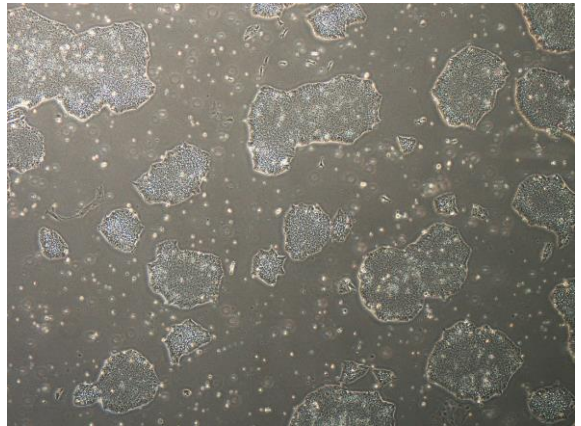
CiRA-j-1547-B: passage-3



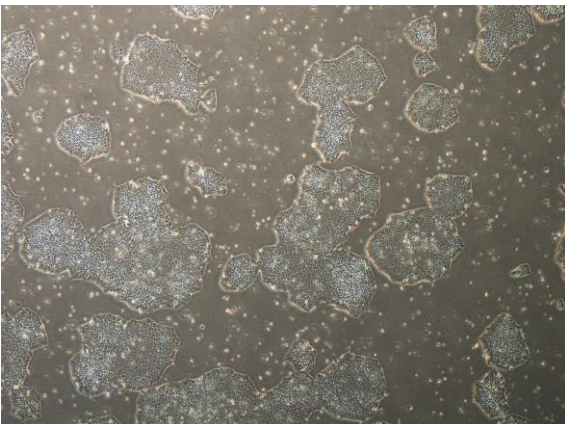
CiRA-j-1547-C: passage-3



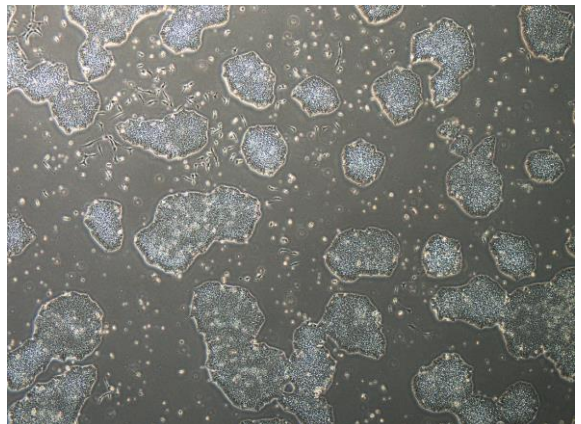
CiRA-j-1547-D: passage-3



CiRA-j-1547-E: passage-3



CiRA-j-1547-F: passage-3



( All images were captured at 4x magnification )